



R-AS42

Scissors Lift

Parts Breakdown

ET080705-en

© MAHA Maschinenbau Haldenwang GmbH & Co. KG

Legal notice based on ISO 16016:

The reproduction, distribution and utilization of this document as well as the communication of its contents to others without explicit authorizations is prohibited. Offenders will be held liable for the payment of damages. All rights reserved in the event of the grant of a patent, utility model or design.

The contents of this edition have been checked with great care. However. Errors cannot be fully excluded. Subject to technical change without notice.

Document

Document N^o: ET080705-en
Approval Date: 30.06.2004

Manufacturer

MAHA Maschinenbau Haldenwang GmbH & Co. KG
Hoyen 20
87490 Haldenwang
Germany

Phone: +49 (0) 8374 585 0
Fax: +49 (0) 8374 585 497
Fax Parts: +49 (0) 8374 585 565
Internet: <http://www.slift.de>
E-Mail: vertrieb@slift.de
Hotline: +49 (0) 180 56242 60 for Brake Testers and Test Lanes
+49 (0) 180 56242 80 for Automotive Lifts
+49 (0) 180 56242 90 for Dynamometers and Emission Testers

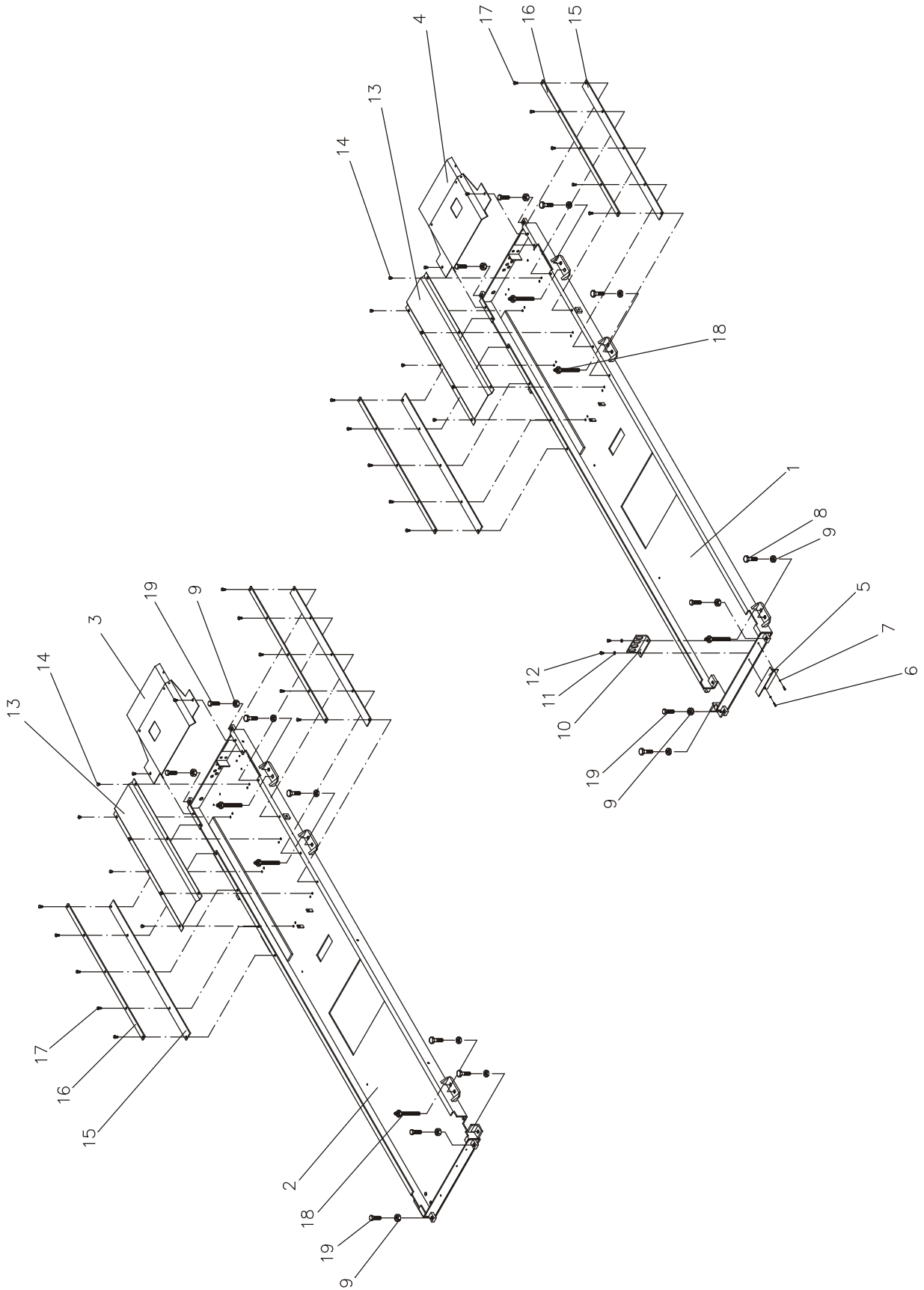
Service

AutomoTec GmbH
Maybachstraße 8
87437 Kempten
Germany
Phone: +49 (0) 180 56242 50
Fax: +49 (0) 180 56242 55
Internet: <http://www.automo-tec.com>
E-Mail: service@automo-tec.com

CONTENTS

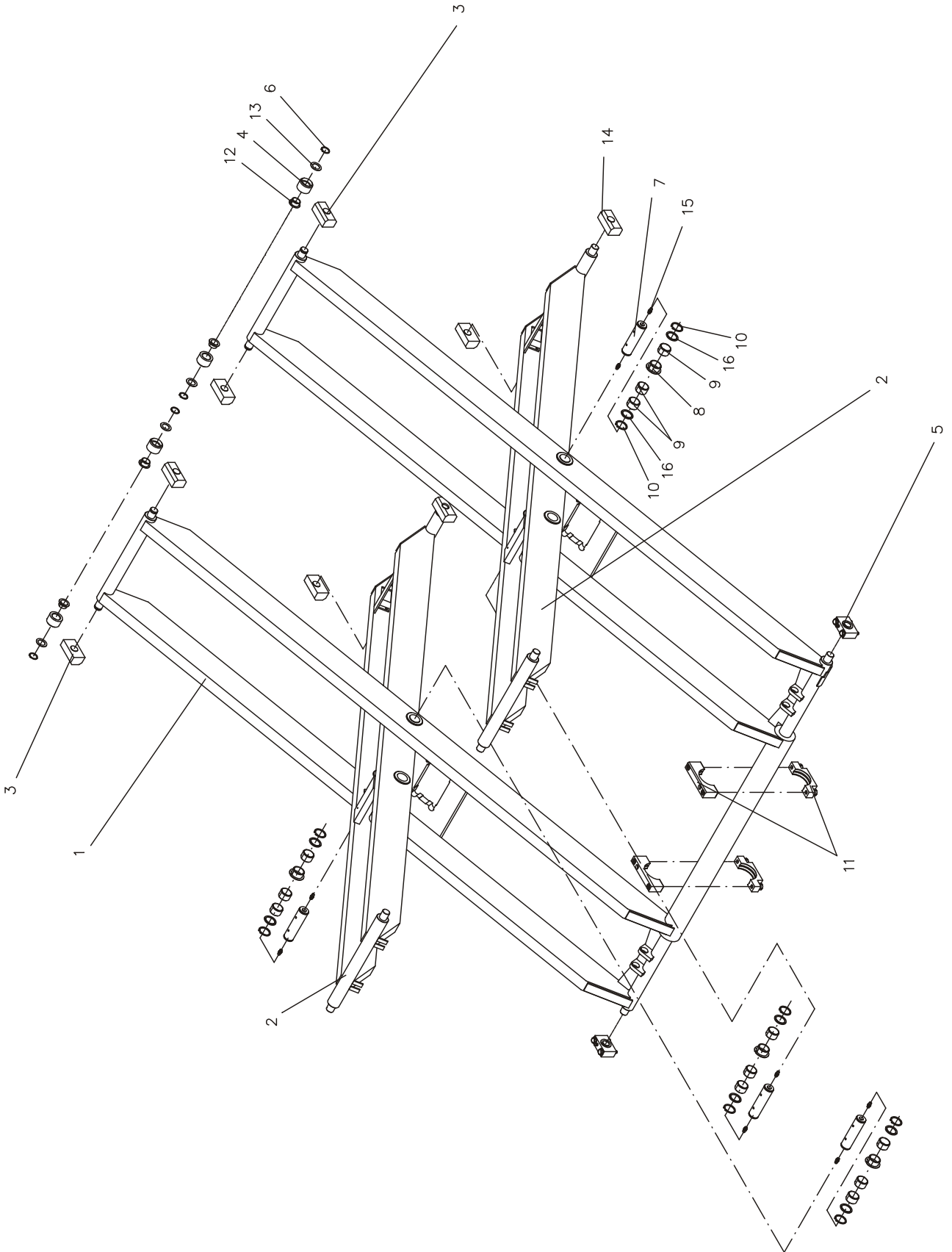
1	Parts Breakdown	1
1.1	Floor Assembly	2
1.2	Scissors Assembly	4
1.3	Bearings	6
1.3.1	Thrust Bearing Bracket Assembly	6
1.3.2	Thrust Bearing, Inside.....	7
1.4	Raising Lever	8
1.5	Hydraulic Cylinders	9
1.6	Lighting.....	10
1.7	Cross Member.....	12
1.8	Main Shaft Cover	12
1.9	Terminal Board.....	13
1.10	Automatic Roll-off Protection.....	14
1.11	Ramps / Roll-off Protection Bars.....	16
1.12	Wheel-Free Jack Installation.....	18
1.13	Supports	20
1.13.1	4.0 m Runway w/o Axle Play Detector	20
1.13.2	4.4 m Runway w/o Axle Play Detector	22
1.13.3	4.8 m Runway w/o Axle Play Detector	24
1.13.4	4.0 m Runway with Axle Play Detector.....	26
1.13.5	4.4 m Runway with Axle Play Detector.....	28
1.13.6	4.8 m Runway with Axle Play Detector.....	30
1.13.7	170 mm Support Assembly.....	32
1.13.8	445 mm Support Assembly.....	33
1.13.9	585 mm Support Assembly.....	34
1.13.10	885 mm Support Assembly.....	35
1.13.11	1185 mm Support Assembly	36

1.1 Floor Assembly



Item	Part #	Description	Specification
1	03 08 02100	Base Plate, Left	
2	03 08 02105	Base Plate, Right	
3	03 08 02050	Cover, Left	
4	03 08 02040	Cover, Right	
5	02 08 02010	Angle	
6	22 0084 04016 1	Allen Screw	M4x16
7	22 0125 04 1	Washer	A4.3
8	22 0933 16060 1	Hex Head Cap Screw	M16x60
9	22 0934 16 1	Hex Nut	M16
10	02 08 02035	Support for Proximity Switch	
11	22 0125 08 1	Washer	A8.4
12	22 0933 08012 1	Hex Head Cap Screw	M8x12
13	02 08 02110	Cover Plate	
14	22 0933 08008 K	Hex Head Cap Screw	M8x8
15	17 2069	Rubber Cover	
16	02 08 02075	Holder	
17	22 0933 08016 1	Hex Head Cap Screw	M8x16
18	23 5050	Heavy-Duty Anchor	
19	22 0933 16050 1	Hex Head Cap Screw	M16x50

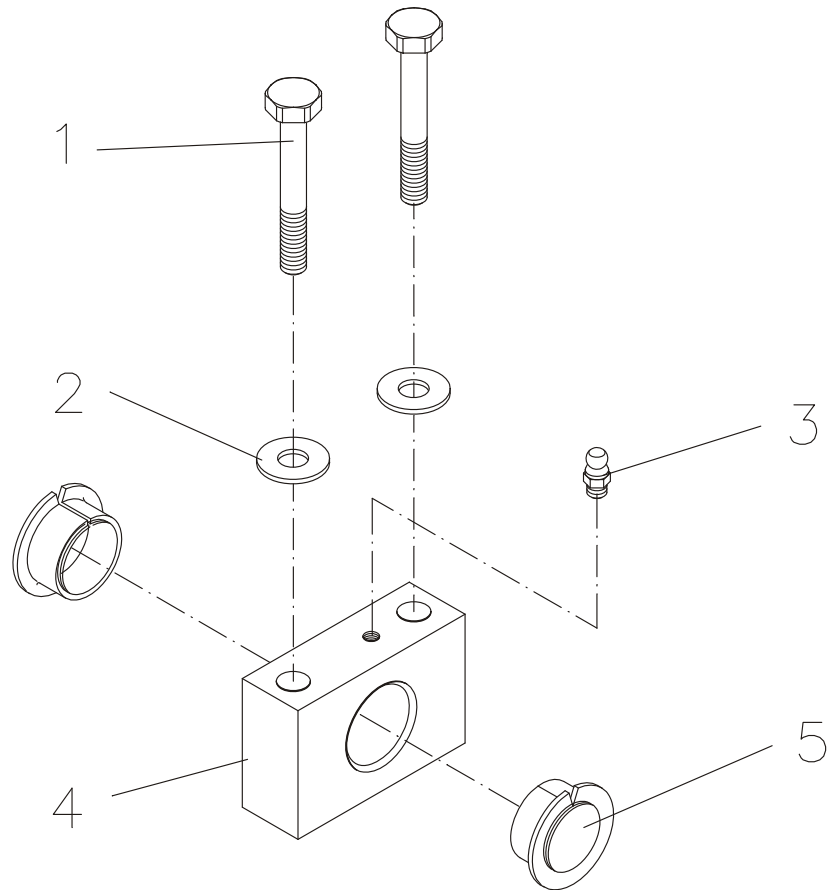
1.2 Scissors Assembly



Item	Part #	Description	Specification
1	03 08 18200	Scissors, Outside	
2	03 08 17050	Scissors, Inside	
3	02 08 17115	Slider Block, Top	
4	02 08 17065	Roller	
5	03 08 02015	Thrust Bearing Bracket Assembly	
6	22 0471 030	Snap Ring	A30x1.5
7	02 08 10530	Scissors Shaft with Lubricating Hole	
8	24 1741 1	Friction Bearing	GLY.PBG 404426 F
9	24 1742	Friction Bearing	GLY.PBG 404430 A
10	22 0471 040	Snap Ring	A40x1.75
11	03 08 04850	Thrust Bearing, Inside	
12	24 1732 1	Friction Bearing	GLY.PBG 303426 F
13	22 0988 304210	Shim Ring	30x42x1
	22 0988 304215	Shim Ring	30x42x1.5
	22 0988 304220	Shim Ring	30x42x2
14	31 6051	Slider Block, Bottom	
15	23 0400	Lubricating Nipple	1/4" -28 UNF-3A
16	22 0988 405025	Shim Ring	A40x50x2.5

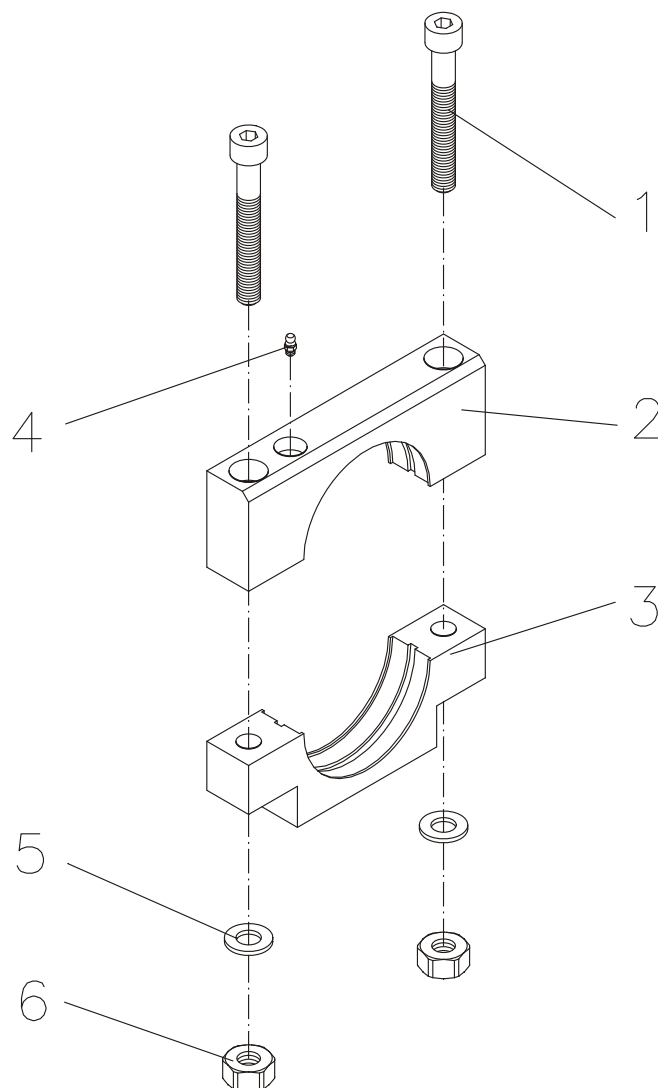
1.3 Bearings

1.3.1 Thrust Bearing Bracket Assembly



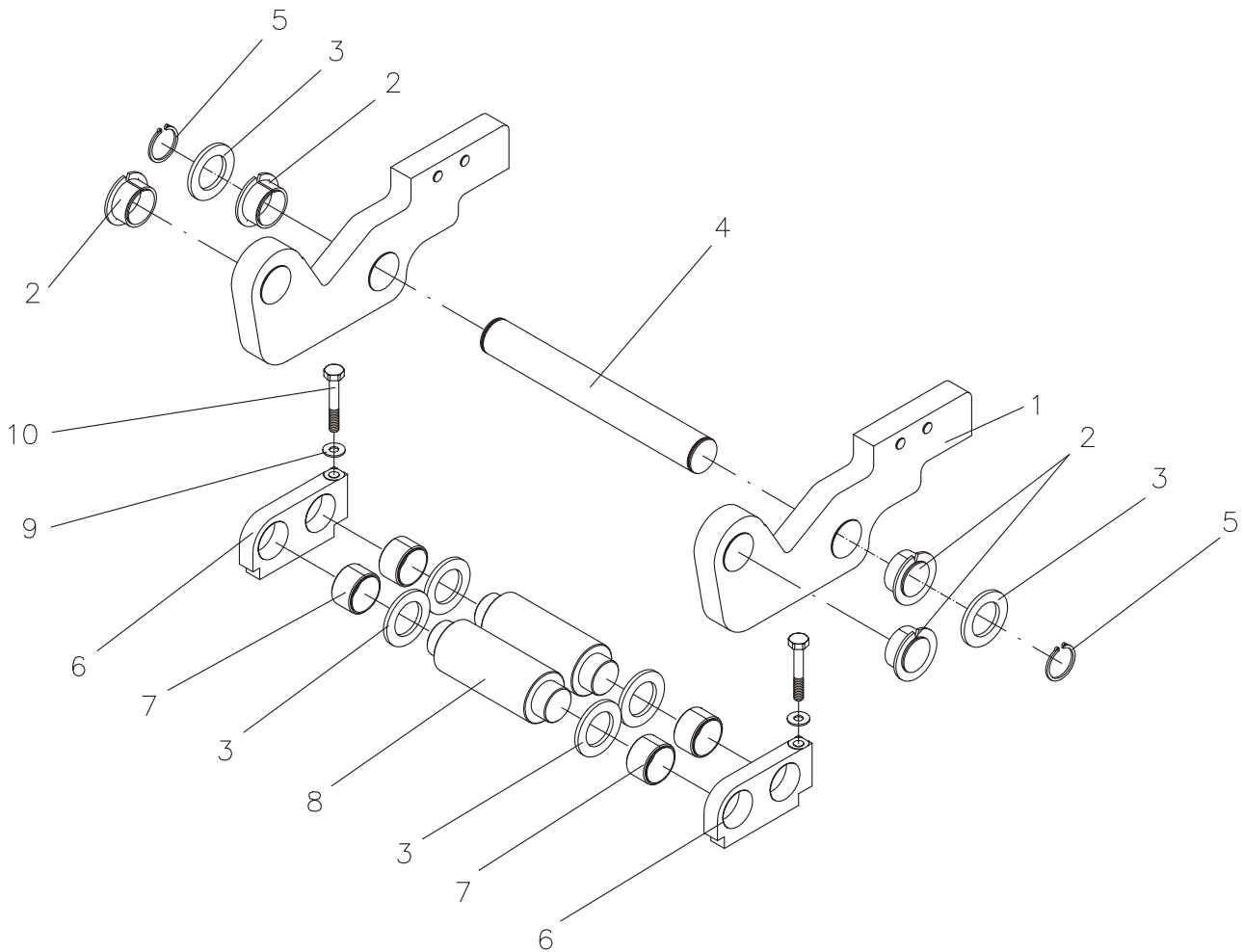
Item	Part #	Description	Specification
1	22 0931 12070	Hex Head Cap Screw	M12x70
2	22 0125 12 1	Washer	A13
3	23 0400	Lubricating Nipple	1/4" – 28 UNF-3A
4	02 08 02020	Thrust Bearing Bracket	
5	24 1728 1	Friction Bearing	GLY.PBG 303416 F

1.3.2 Thrust Bearing, Inside



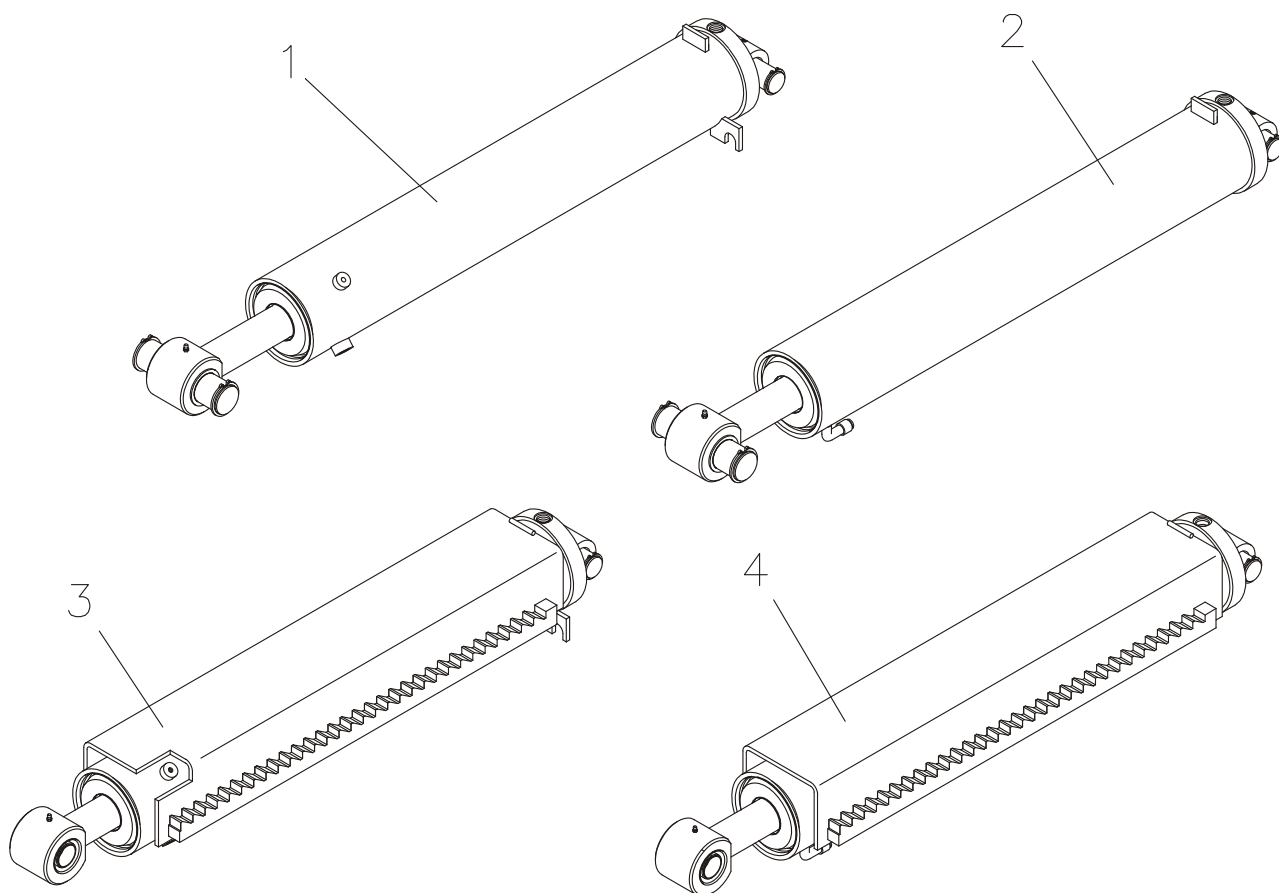
Item	Part #	Description	Specification
1	22 0912 12090 1	Allen Screw	M12x90
2	02 08 04810	Bearing Shell, Top	
3	02 08 04800	Bearing Shell, Bottom	
4	23 0400	Lubricating Nipple	1/4" – 28 UNF-3A
5	22 0125 12 1	Washer	A13
6	22 0934 12 1	Hex Head Cap Screw	M12

1.4 Raising Lever



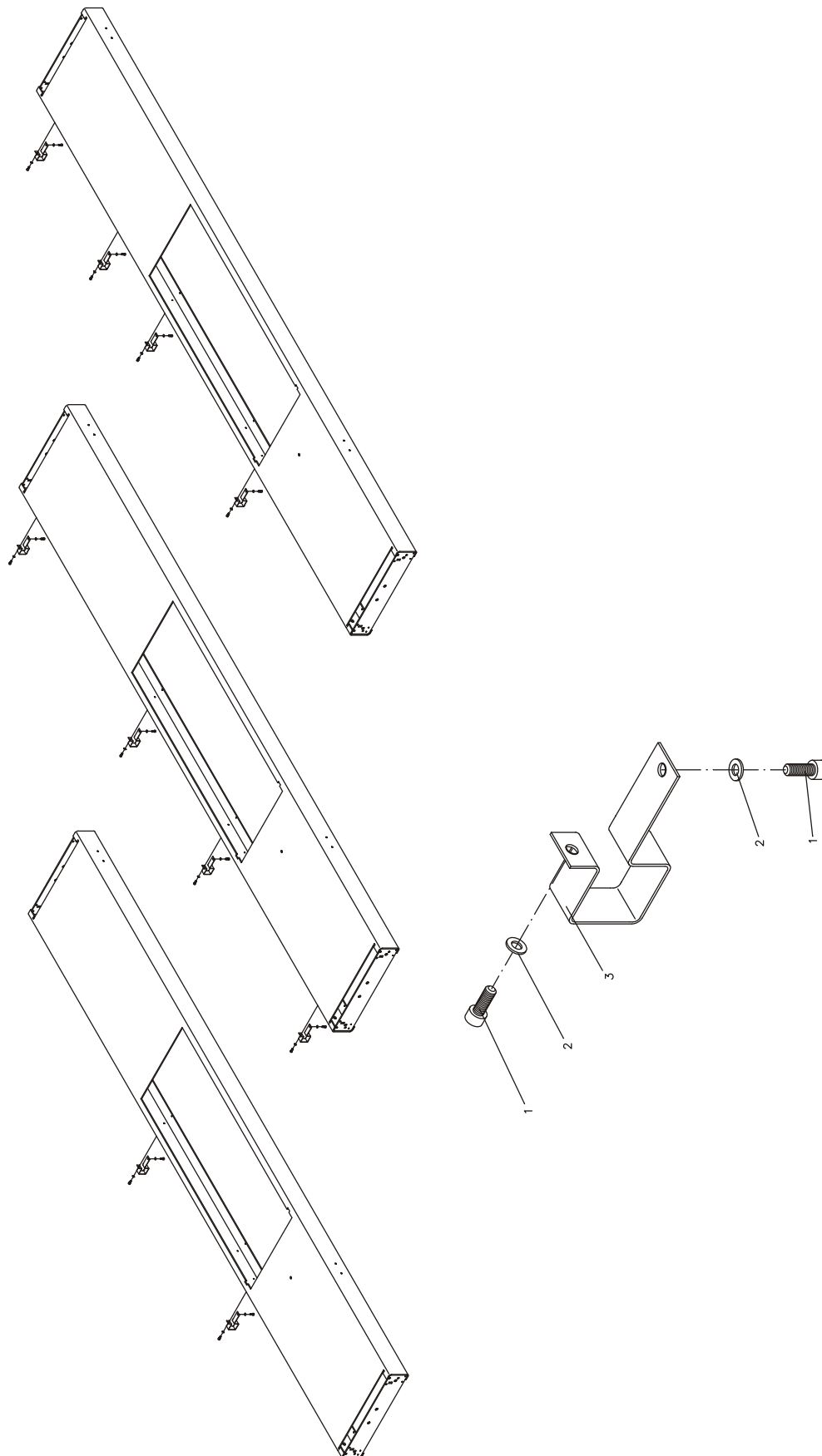
Item	Part #	Description	Specification
1	02 08 56000	Lever	
2	24 1741 1	Friction Bearing	GLY.PBG 404426 F
	24 1742	Friction Bearing	GLY.PG 404430 A
3	22 0988 405005	Shim Ring	40x50x0.5
	22 0988 405010	Shim Ring	40x50x1
	22 0988 405020	Shim Ring	40x50x2
4	02 08 17110	Shaft	
5	22 0471 040	Snap Ring	A40x1.75
6	02 08 56120	Bearing Bracket	
7	24 1740	Friction Bearing	GLY.PG 404420 A
8	02 08 56125	Roller	
9	22 012 10 1	Washer	A10.5
10	22 0933 10070 1	Hex Head Cap Screw	M10x70

1.5 Hydraulic Cylinders



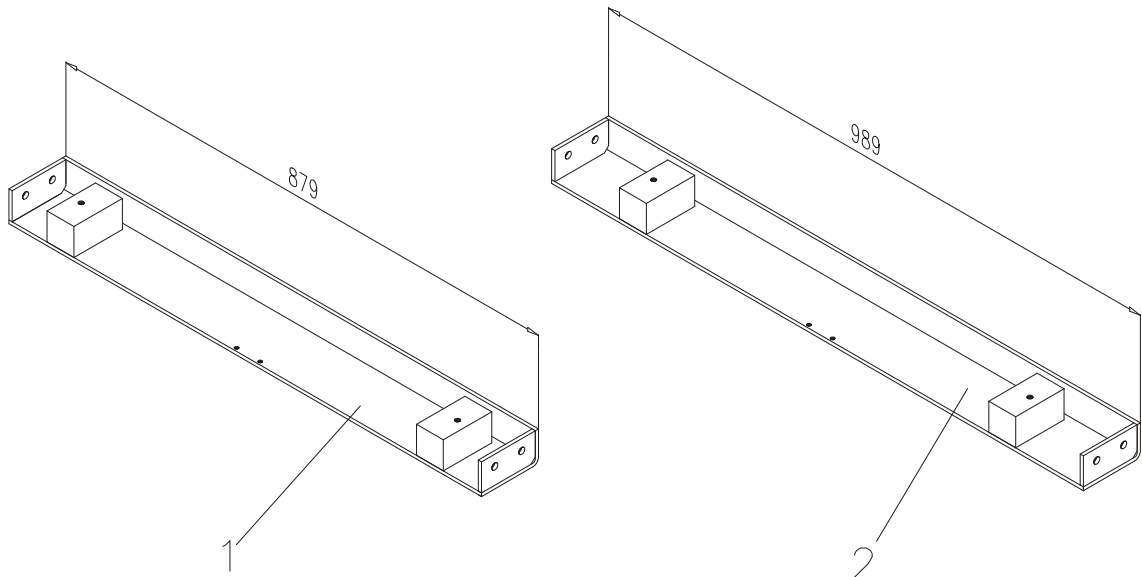
Item	Part #	Description	Specification
1	03 08 57002	Master Cylinder	
2	03 08 57008	Slave Cylinder	
3	03 08 57003	Master Cylinder with Serrated Bar	
4	03 08 57007	Slave Cylinder with Serrated Bar, Type GN	
	03 08 57009	Slave Cylinder with Serrated Bar, Type +1	

1.6 Lighting



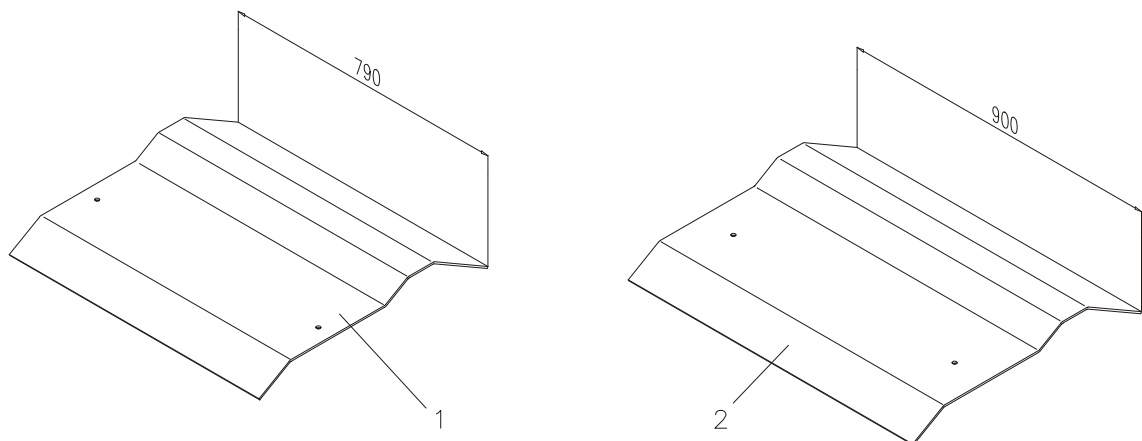
Item	Part #	Description	Specification
1	22 0912 06016 1	Allen Screw	M6x16
2	22 0125 06 1	Washer	A6.4
3	02 08 23045	Holder	

1.7 Cross Member



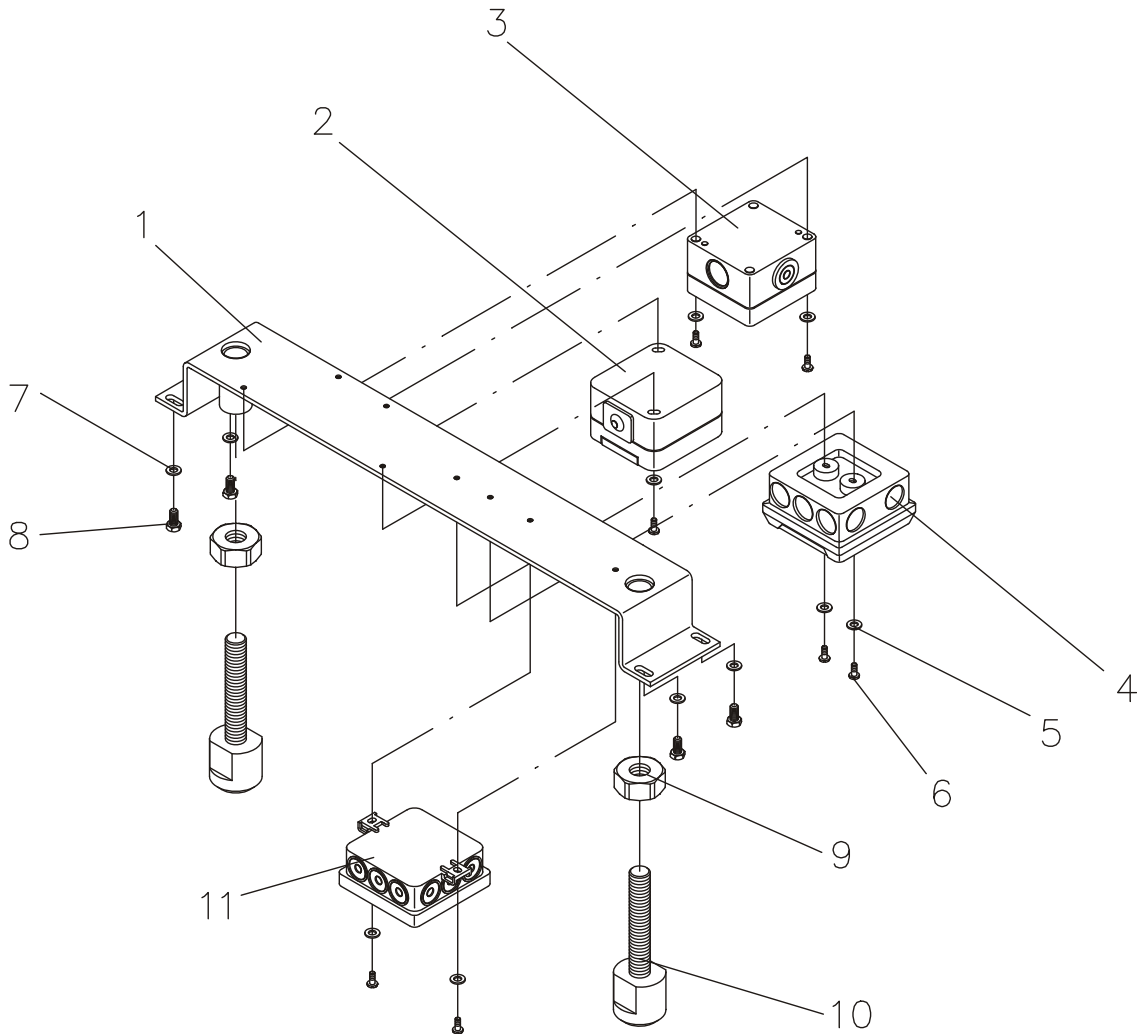
Item	Part #	Description	Specification
1	03 08 18100	Cross Member	
2	03 08 18105	Cross Member, Daimler Version	

1.8 Main Shaft Cover



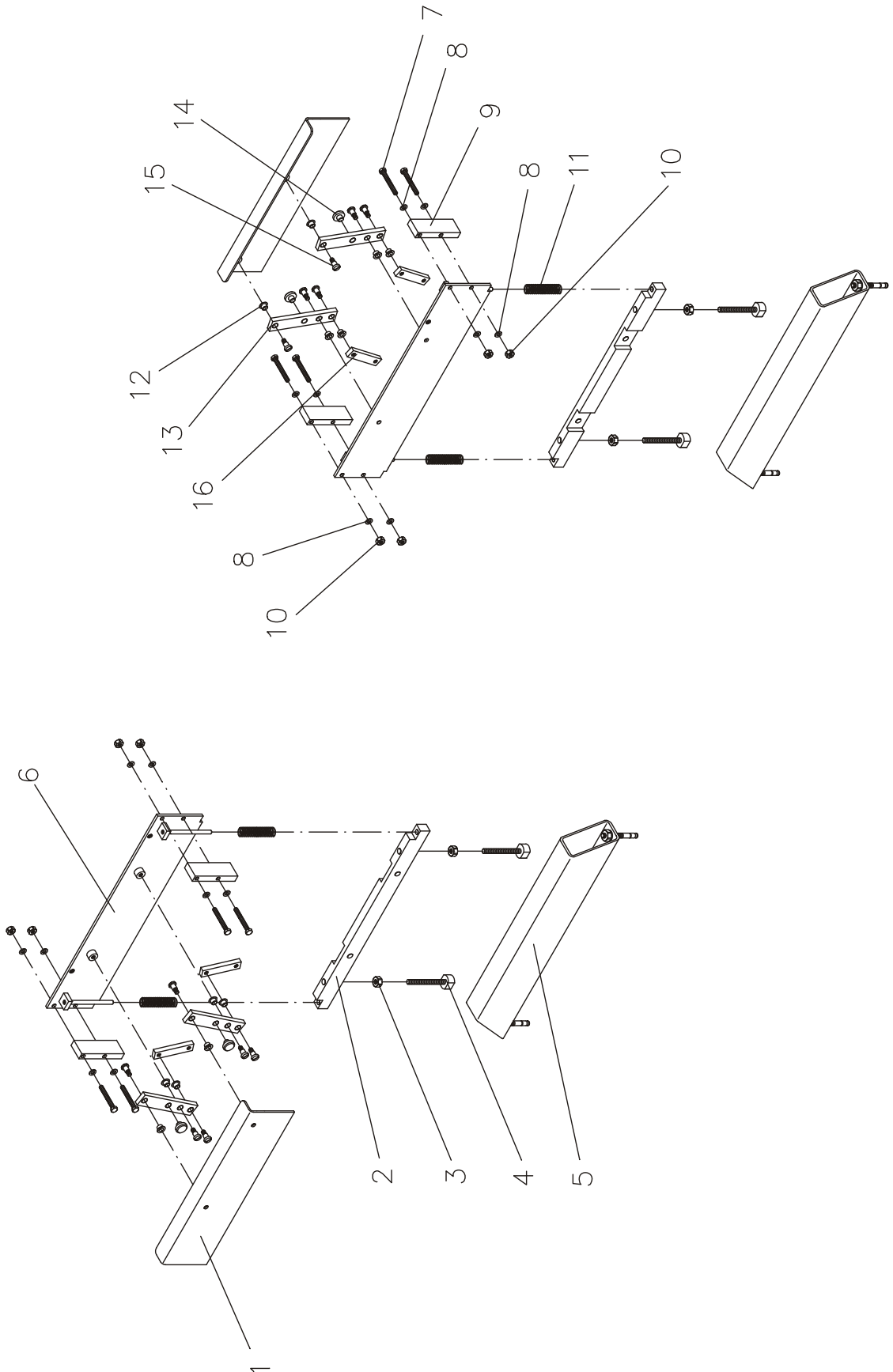
Item	Part #	Description	Specification
1	03 08 05100	Main Shaft Cover	
2	03 08 05120	Main Shaft Cover, Daimler Version	

1.9 Terminal Board



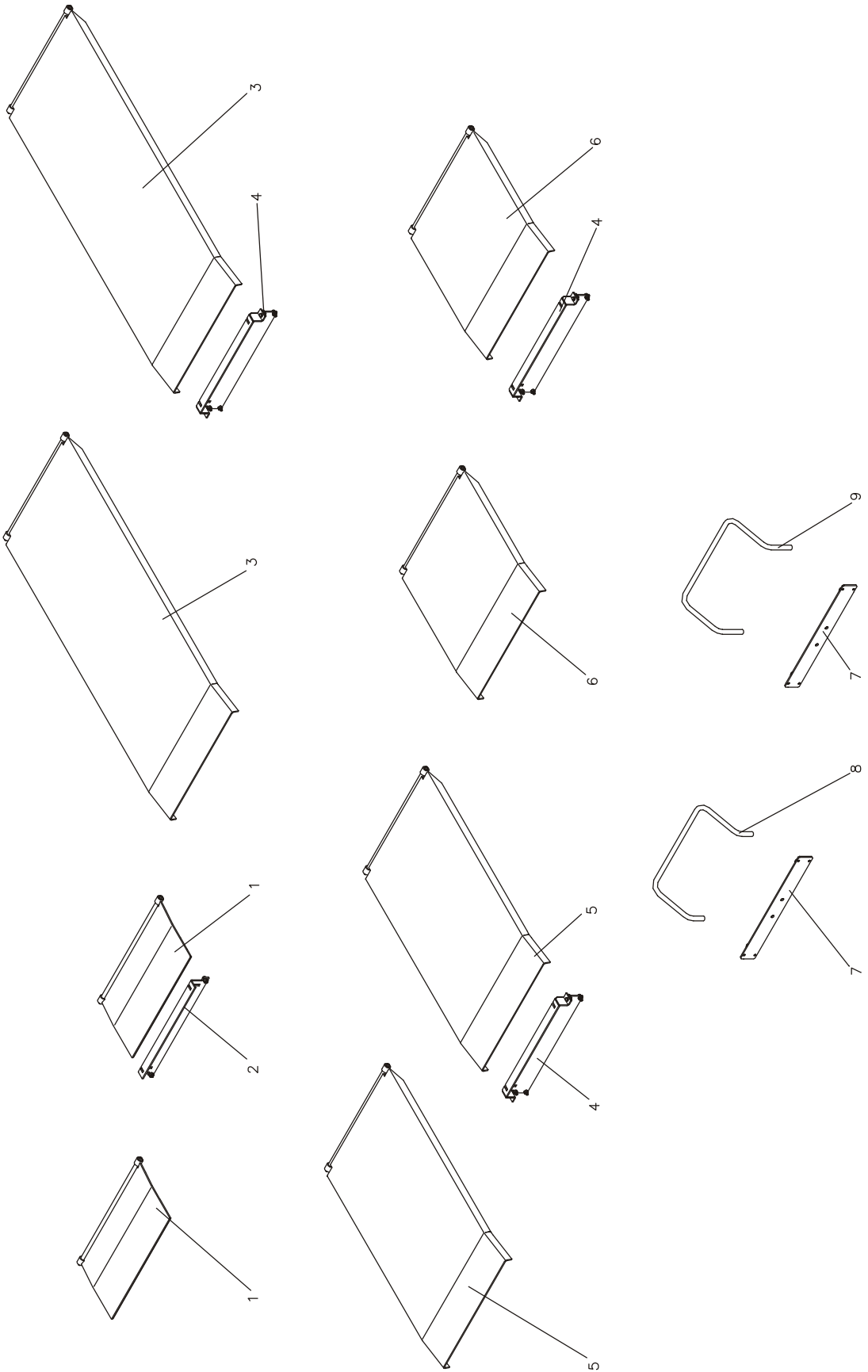
Item	Part #	Description	Specification
1	02 08 79363 E	Holder	
	03 08 79362	Terminal Board	
2	53 0108	Socket	
3	52 2018	Infrared Eye with Receiver	
4	53 2470	Branch Box	
5	22 0125 04 1	Washer	A4.3
6	22 0084 04010 1	Allen Screw	M4x10
7	22 0125 06 1	Washer	A6.4
8	22 0933 06012 1	Hex Head Cap Screw	M6x12
9	22 0934 16 1	Hex Nut	M16
10	31 6210	Dowel Pin	M16x94
11	53 2035	Branch Box, Plastic	

1.10 Automatic Roll-off Protection



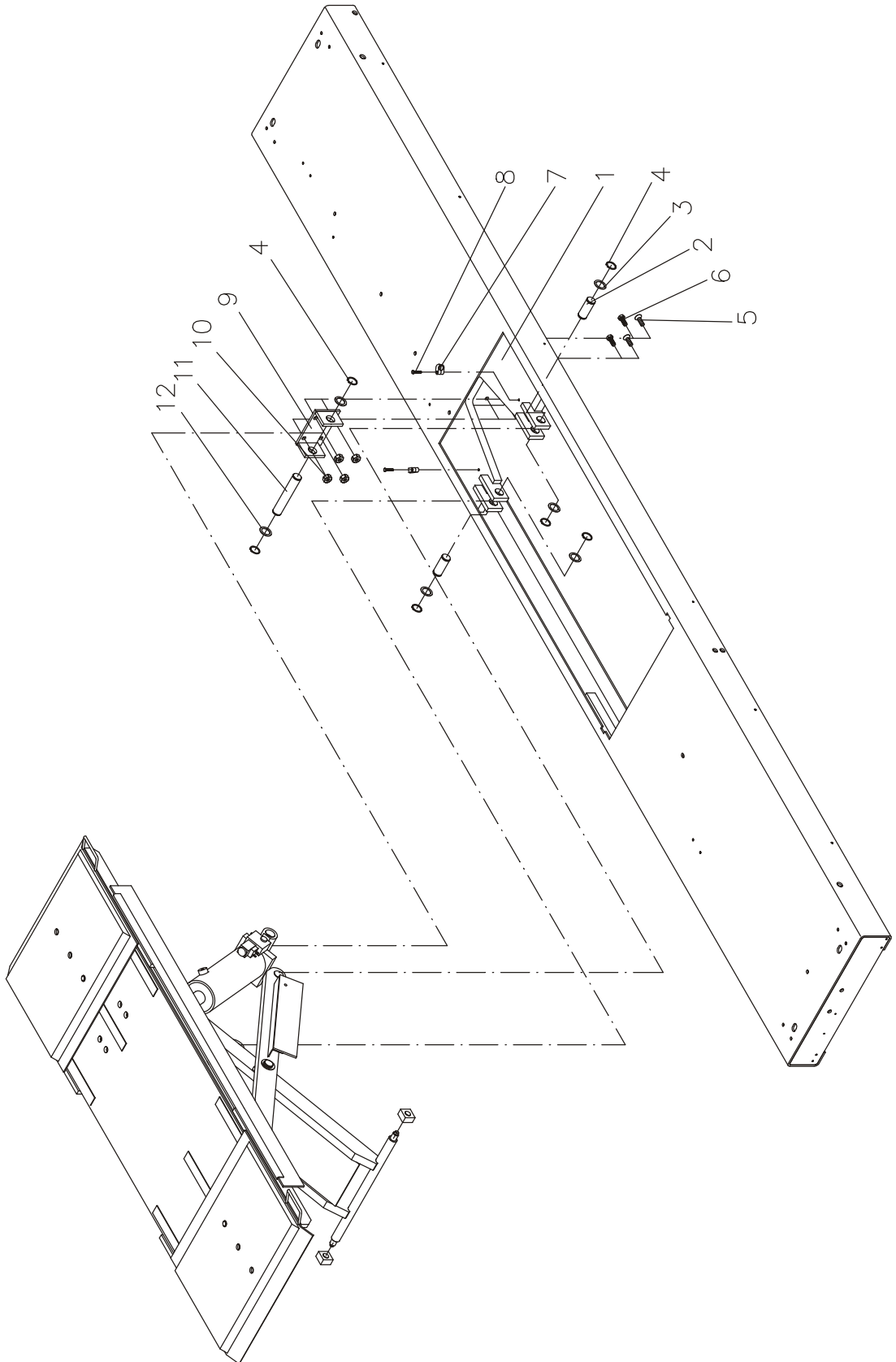
Item	Part #	Description	Specification
1	03 08 87800	Roll-off Protection w/o Compensating Plates	
	03 08 87850	Roll-off Protection with Compensating Plates	
2	02 08 87530	Guide	
3	22 0934 10 1	Hex Nut	M10
4	31 6204 1	Dowel Pin	
5	03 08 87560	Support for Lifting Height	285 mm
	03 08 87855	Support for Lifting Height	225 mm
6	03 08 87600	Base Support	
	03 08 87700	Base Support for Compensating Plates	
7	22 0933 08065 1	Hex Head Cap Screw	M8x65
8	22 0125 08 1	Washer	A8.4
9	02 08 87000	Spacer	
10	22 0934 08 1	Hex Nut	M8
11	23 9225 020 120	Pressure Spring	2.5x20x120
12	24 1710 2	Friction Bearing	GLY.PBG 101209
13	02 08 87510	Deflection Lever	155 lg.
14	02 08 87540	Slider Block	
15	22 0923 08012	Oval Head Screw	M8x12/10
16	02 08 87520	Deflection Lever	90 lg.

1.11 Ramps / Roll-off Protection Bars



Item	Part #	Description	Specification
1	03 08 24227	Approach Flap	
2	03 08 20020	Holder for Approach Flap	
3	03 08 24009	Approach Flap, Long	
4	03 08 20030	Ramp Holder for Superstructure	
5	03 08 24048	Approach Ramp	1100 mm
6	03 08 24050	Approach Ramp, Short	
7	03 08 20420 E	Adapter Plate for Roll-off Protection Bar	
8	02 08 21935	Roll-off Protection Bar, Short	
9	02 08 21940	Roll-off Protection Bar, Long	

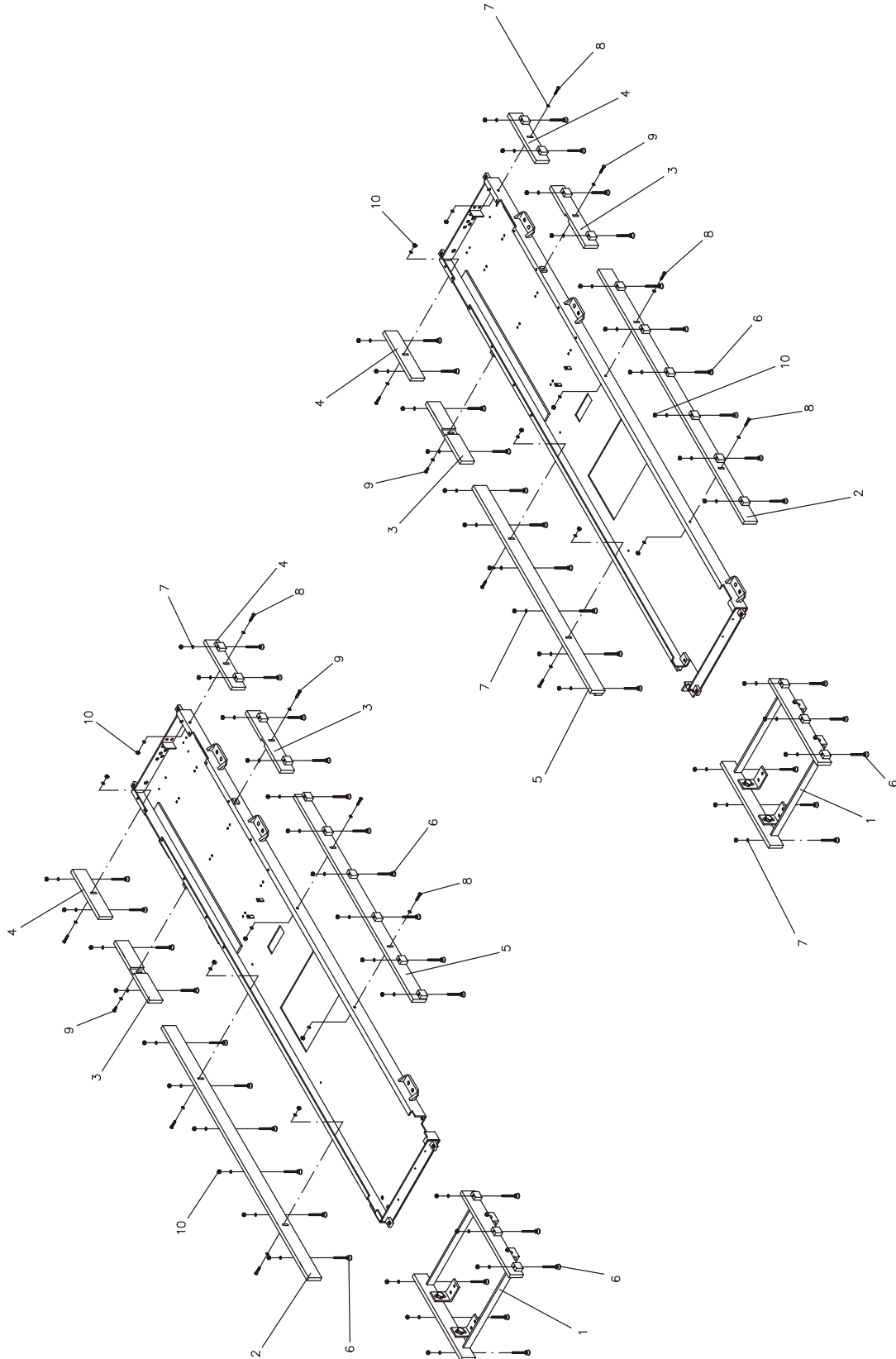
1.12 Wheel-Free Jack Installation



Item	Part #	Description	Specification
1	03 08 23510	Cutout for Wheel-Free Jack	
2	02 08 31070	Shaft	
3	22 0988 304210	Shim Ring	30x42x1
4	22 0471 030	Snap Ring	A30x1.5
5	22 7991 12030 1	Countersunk Screw	M12x30
6	22 0933 12030 1	Hex Head Cap Screw	M12x30
7	27 3650	Clamp	
8	22 0933 06030 1	Hex Head Cap Screw	M6x30
9	03 08 23505	Wheel-Free Jack Cylinder Support	
10	22 0934 12 1	Hex Nut	M12
11	02 08 32105	Shaft	
12	22 0988 304220	Shim Ring	30x42x2

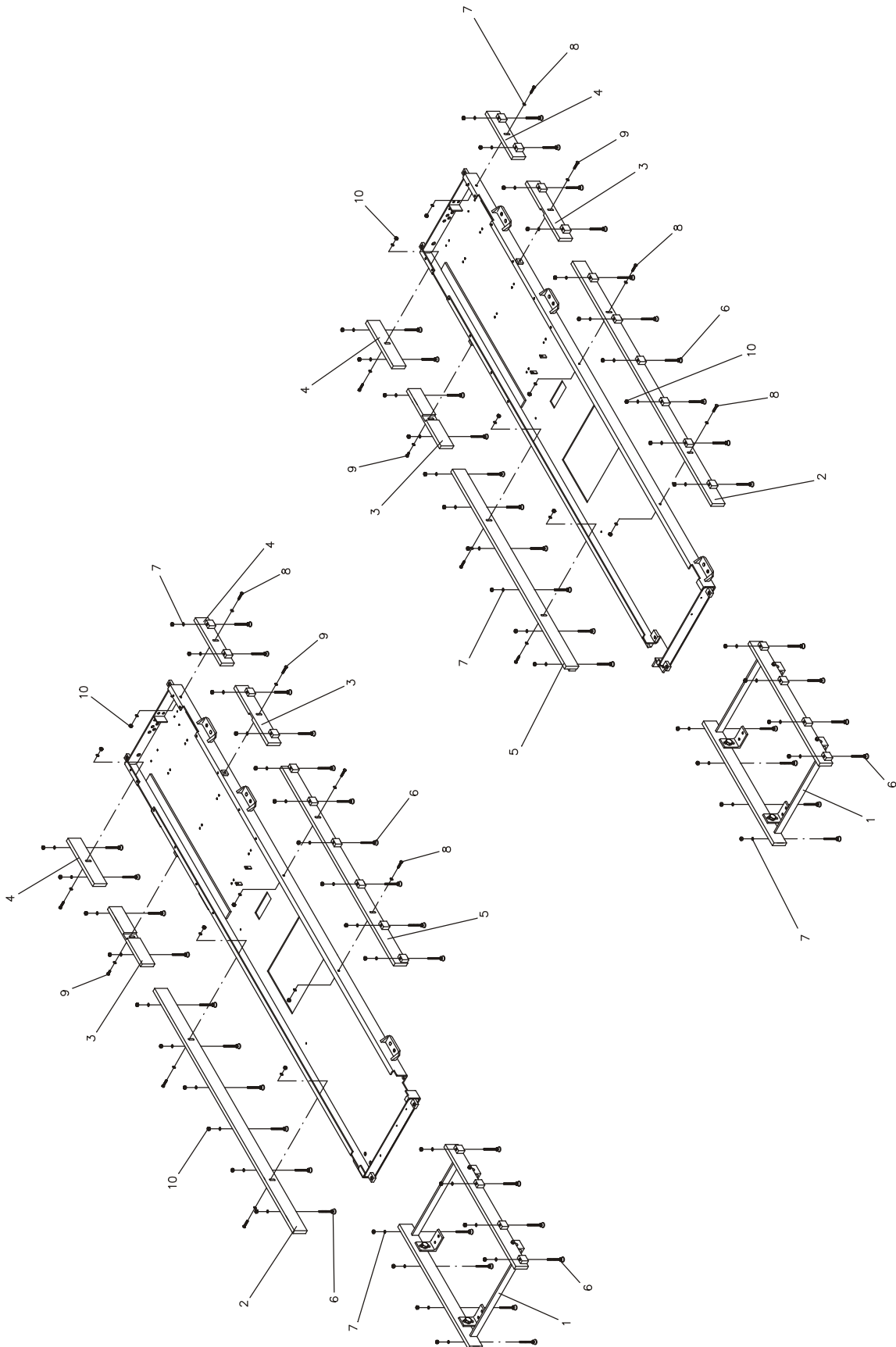
1.13 Supports

1.13.1 4.0 m Runway w/o Axle Play Detector



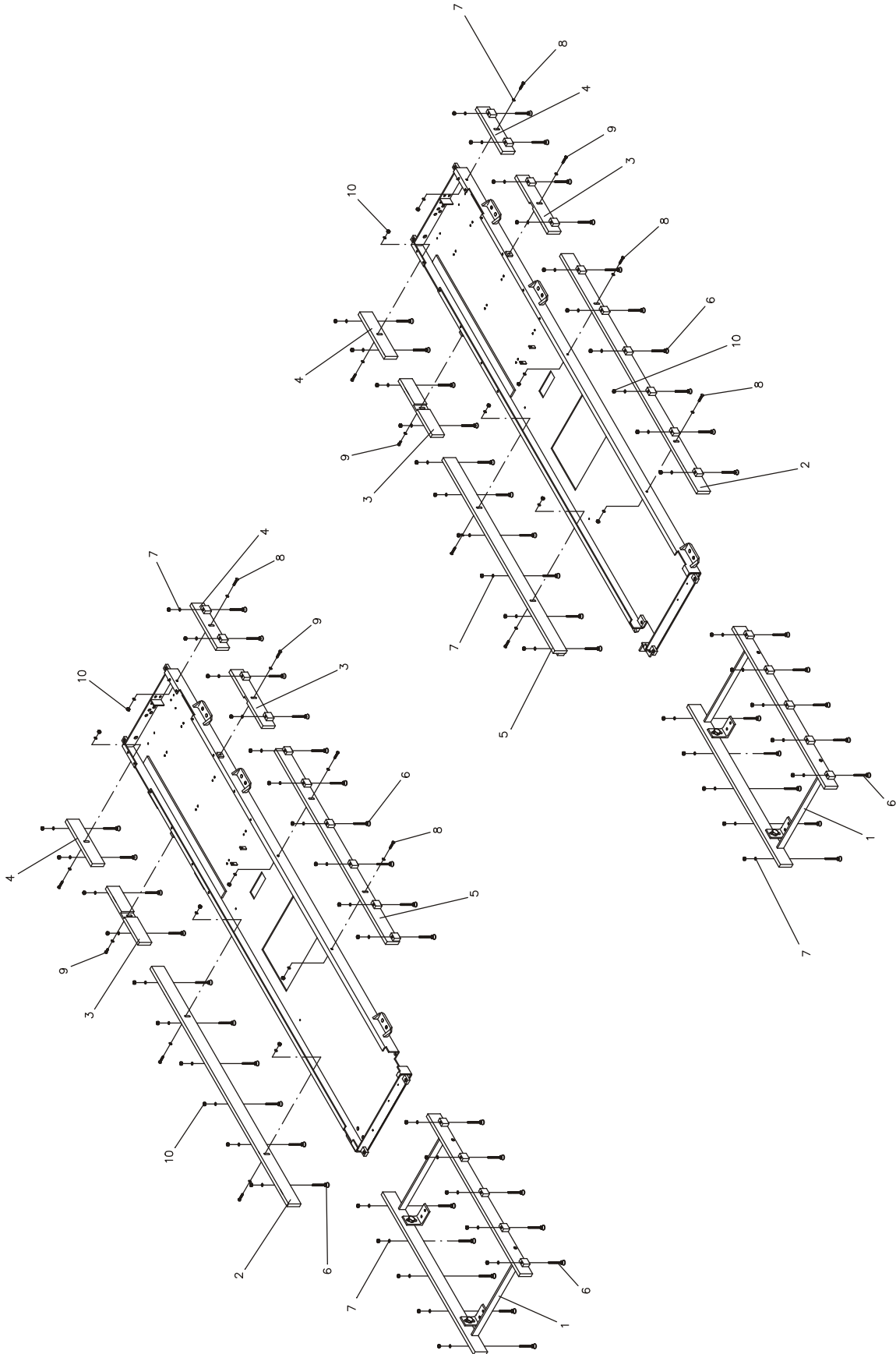
Item	Part #	Description	Specification
1	03 08 02250	Support	585 mm Assembly
2	03 08 02215	Support	1760 mm
3	03 08 02220	Support	416 mm
4	03 08 02235	Support	330 mm
5	03 08 02260	Support	1430 mm
6	23 1430 422	Hinged Foot	M8x80
7	22 0125 08 1	Washer	A8.4
8	22 0931 08040 1	Hex Head Cap Screw	M8x40
9	22 0933 08020 1	Hex Head Cap Screw	M8x20
10	22 0934 08 1	Hex Nut	M8

1.13.2 4.4 m Runway w/o Axle Play Detector



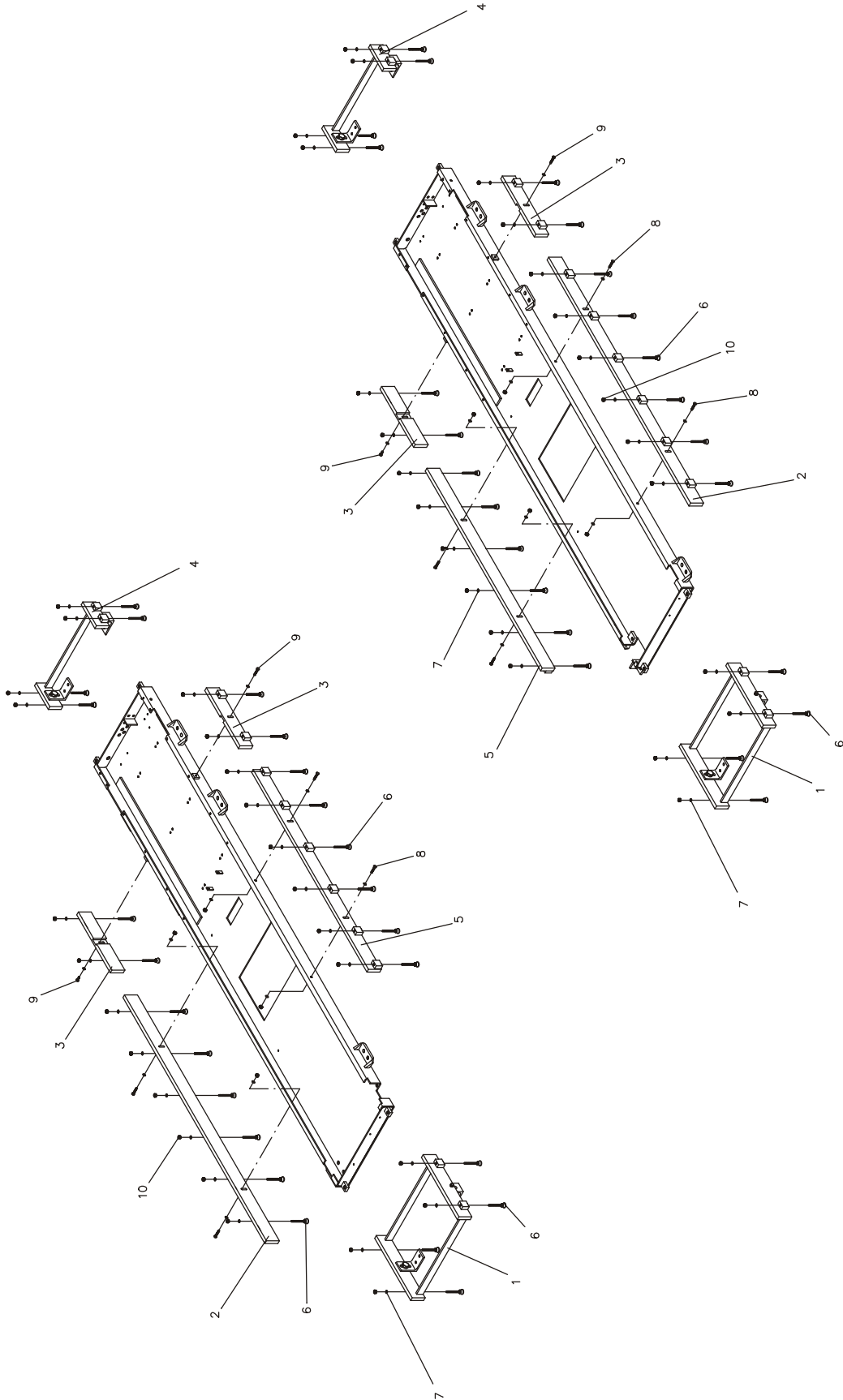
Item	Part #	Description	Specification
1	03 08 02280	Support	585 mm Assembly
2	03 08 02215	Support	1760 mm
3	03 08 02220	Support	416 mm
4	03 08 02235	Support	330 mm
5	03 08 02260	Support	1430 mm
6	23 1430 422	Hinged Foot	M8x80
7	22 0125 08 1	Washer	A8.4
8	22 0931 08040 1	Hex Head Cap Screw	M8x40
9	22 0933 08020 1	Hex Head Cap Screw	M8x20
10	22 0934 08 1	Hex Nut	M8

1.13.3 4.8 m Runway w/o Axle Play Detector



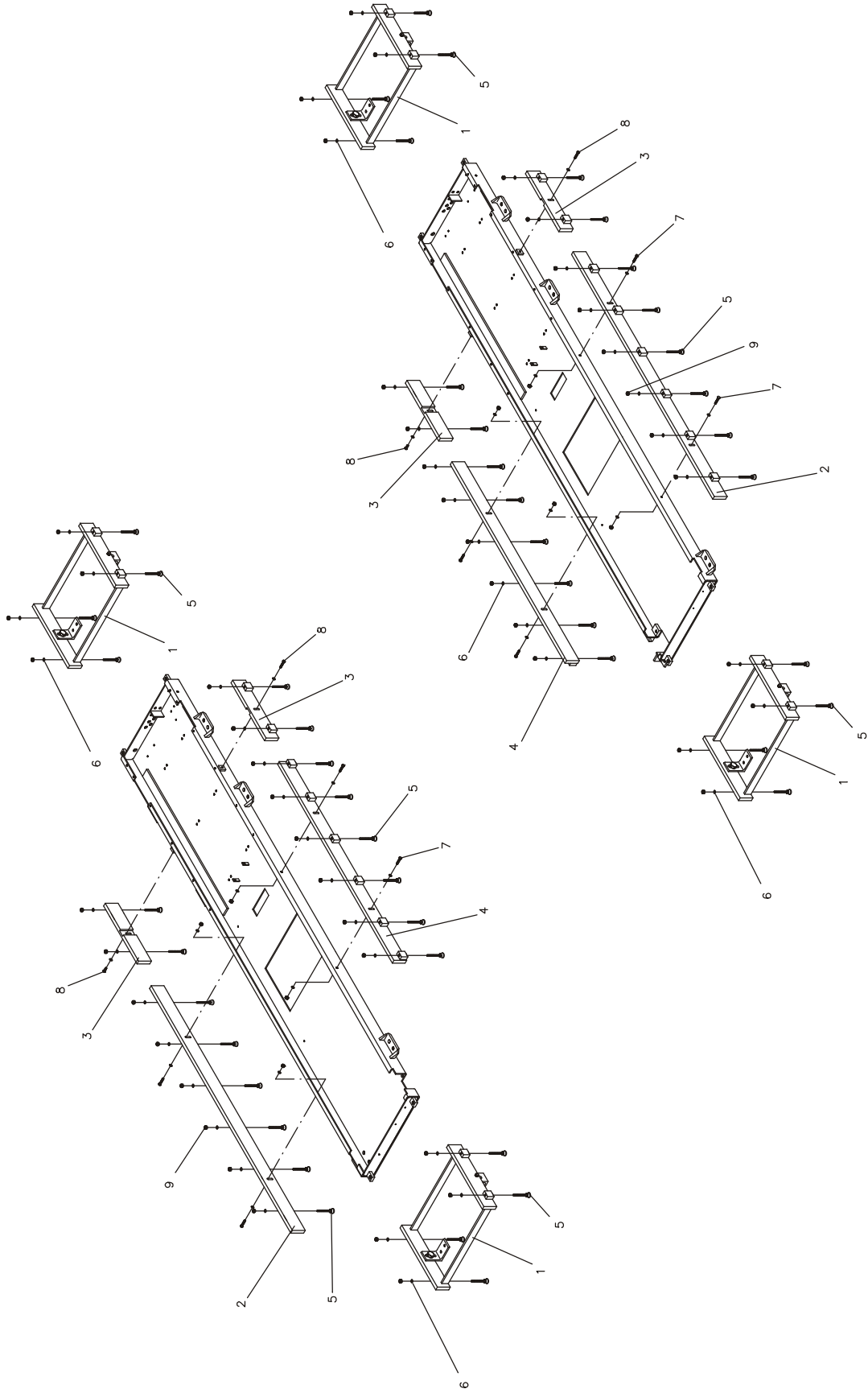
Item	Part #	Description	Specification
1	03 08 02300	Support	1185 mm Assembly
2	03 08 02215	Support	1760 mm
3	03 08 02220	Support	416 mm
4	03 08 02235	Support	330 mm
5	03 08 02260	Support	1430 mm
6	23 1430 422	Hinged Foot	M8x80
7	22 0125 08 1	Washer	A8.4
8	22 0931 08040 1	Hex Head Cap Screw	M8x40
9	22 0933 08020 1	Hex Head Cap Screw	M8x20
10	22 0934 08 1	Hex Nut	M8

1.13.4 4.0 m Runway with Axle Play Detector



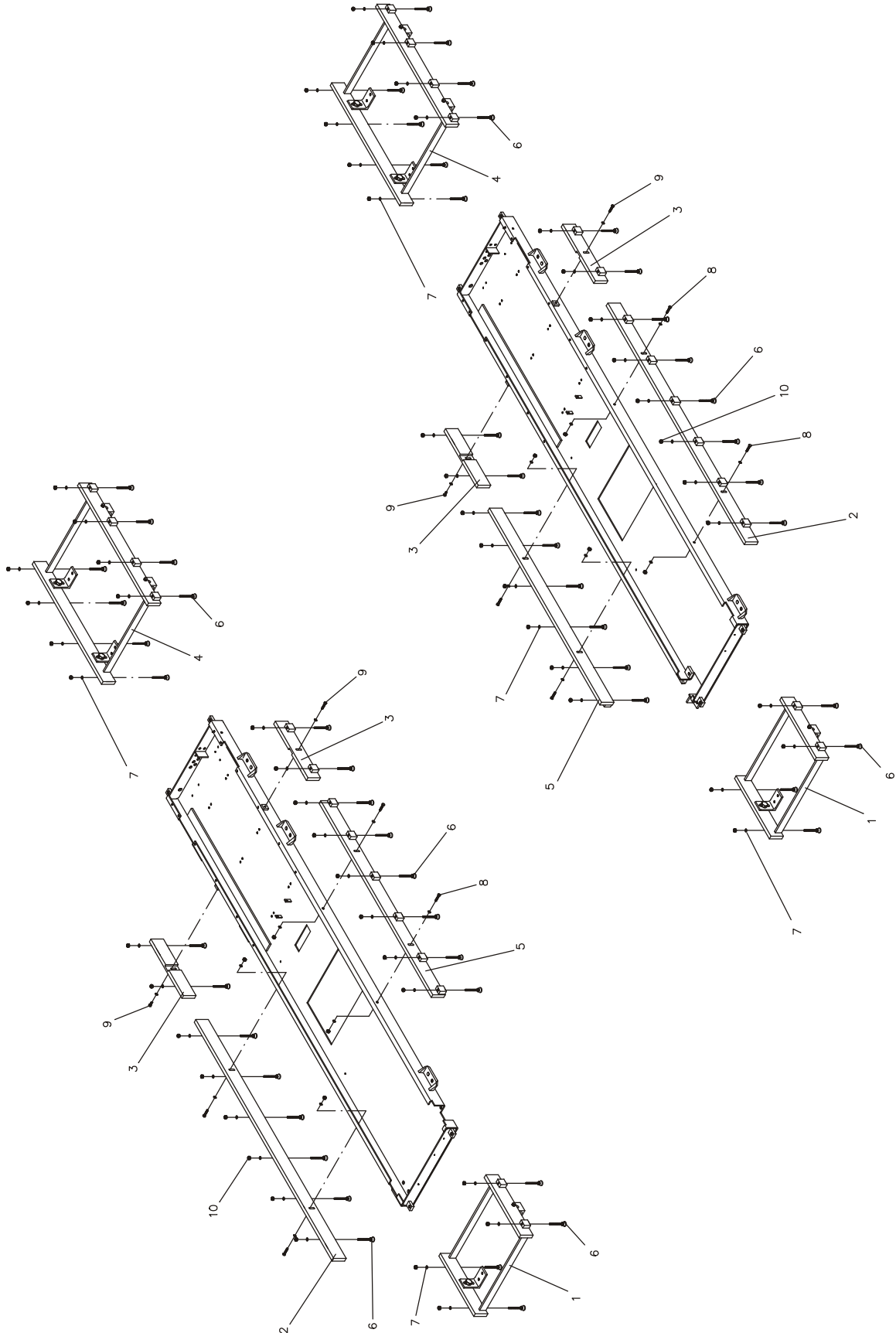
Item	Part #	Description	Specification
1	03 08 02330	Support	445 mm Assembly
2	03 08 02215	Support	1760 mm
3	03 08 02220	Support	416 mm
4	03 08 02370	Support	170 mm Assembly
5	03 08 02260	Support	1430 mm
6	23 1430 422	Hinged Foot	M8x80
7	22 0125 08 1	Washer	A8.4
8	22 0931 08040 1	Hex Head Cap Screw	M8x40
9	22 0933 08020 1	Hex Head Cap Screw	M8x20
10	22 0934 08 1	Hex Nut	M8

1.13.5 4.4 m Runway with Axle Play Detector



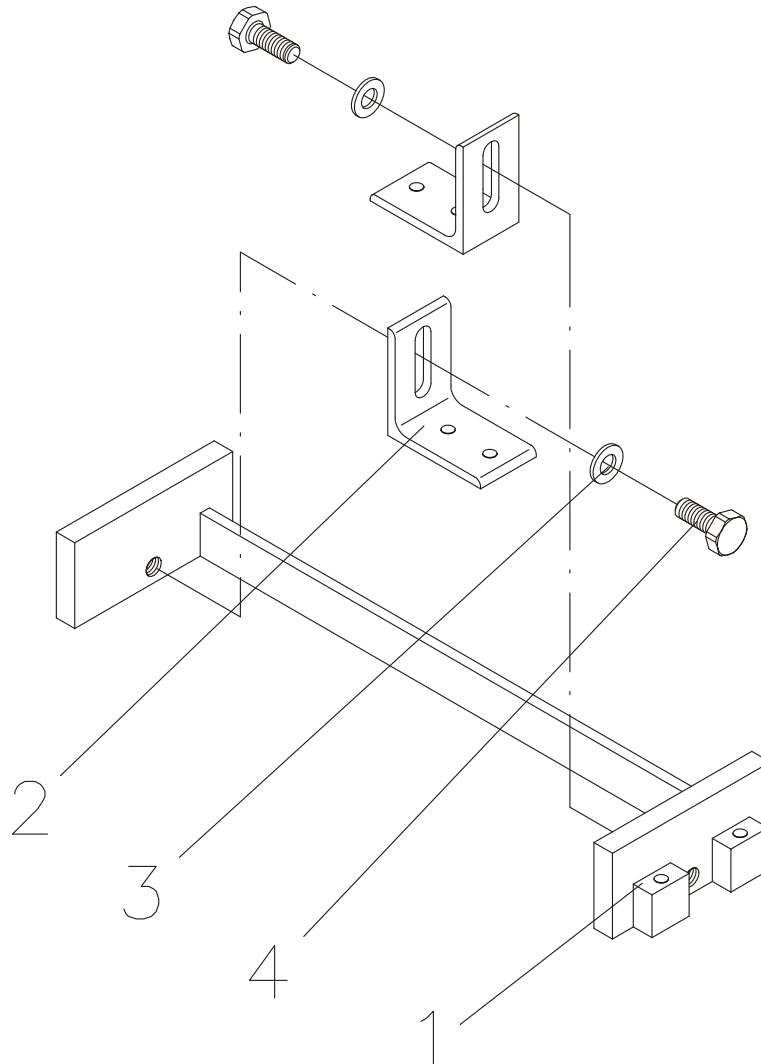
Item	Part #	Description	Specification
1	03 08 02330	Support	445 mm Assembly
2	03 08 02215	Support	1760 mm
3	03 08 02220	Support	416 mm
4	03 08 02260	Support	1430 mm
5	23 1430 422	Hinged Foot	M8x80
6	22 0125 08 1	Washer	A8.4
7	22 0931 08040 1	Hex Head Cap Screw	M8x40
8	22 0933 08020 1	Hex Head Cap Screw	M8x20
9	22 0934 08 1	Hex Nut	M8

1.13.6 4.8 m Runway with Axle Play Detector



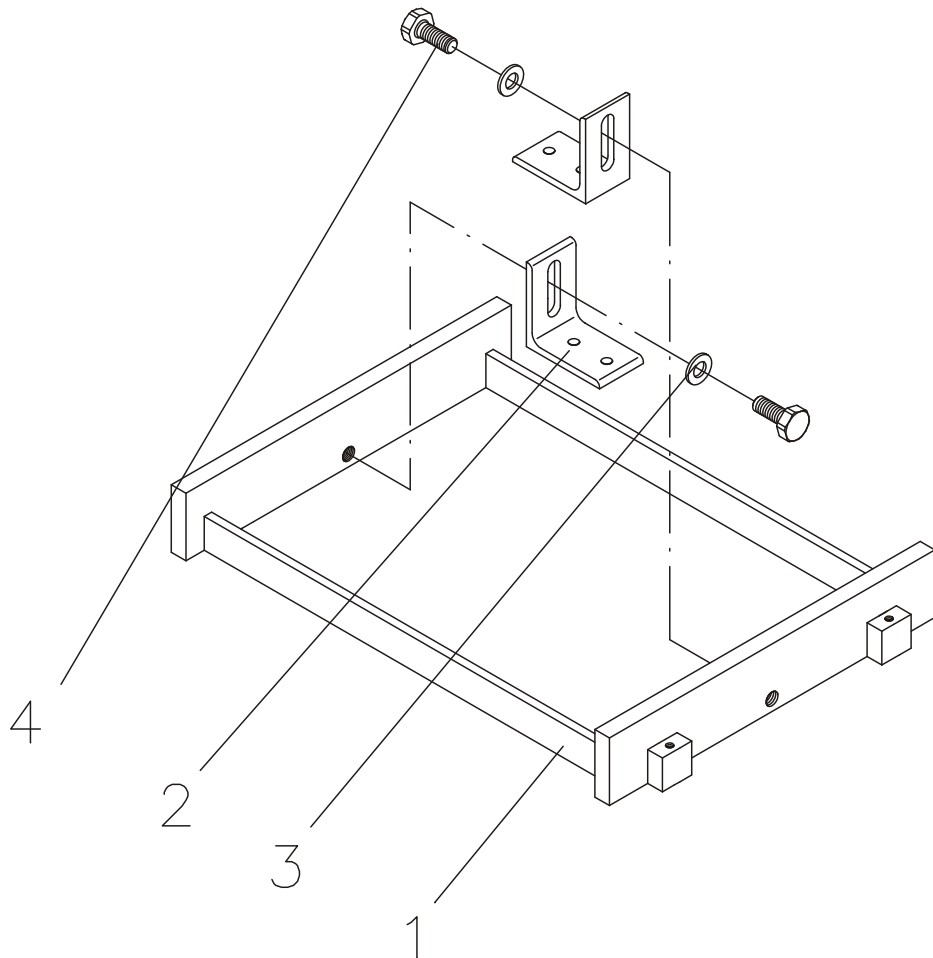
Item	Part #	Description	Specification
1	03 08 02330	Support	445 mm Assembly
2	03 08 02215	Support	1760 mm
3	02 08 02223	Support	416 mm
4	03 08 02280	Support	885 mm Assembly
5	03 08 02200	Support	1430 mm
6	23 1430 422	Hinged Foot	M8x80
7	22 0125 08 1	Washer	A8.4
8	22 0931 08040 1	Hex Head Cap Screw	M8x40
9	22 0933 08020 1	Hex Head Cap Screw	M8x20
10	22 0934 08 1	Hex Nut	M8

1.13.7 170 mm Support Assembly



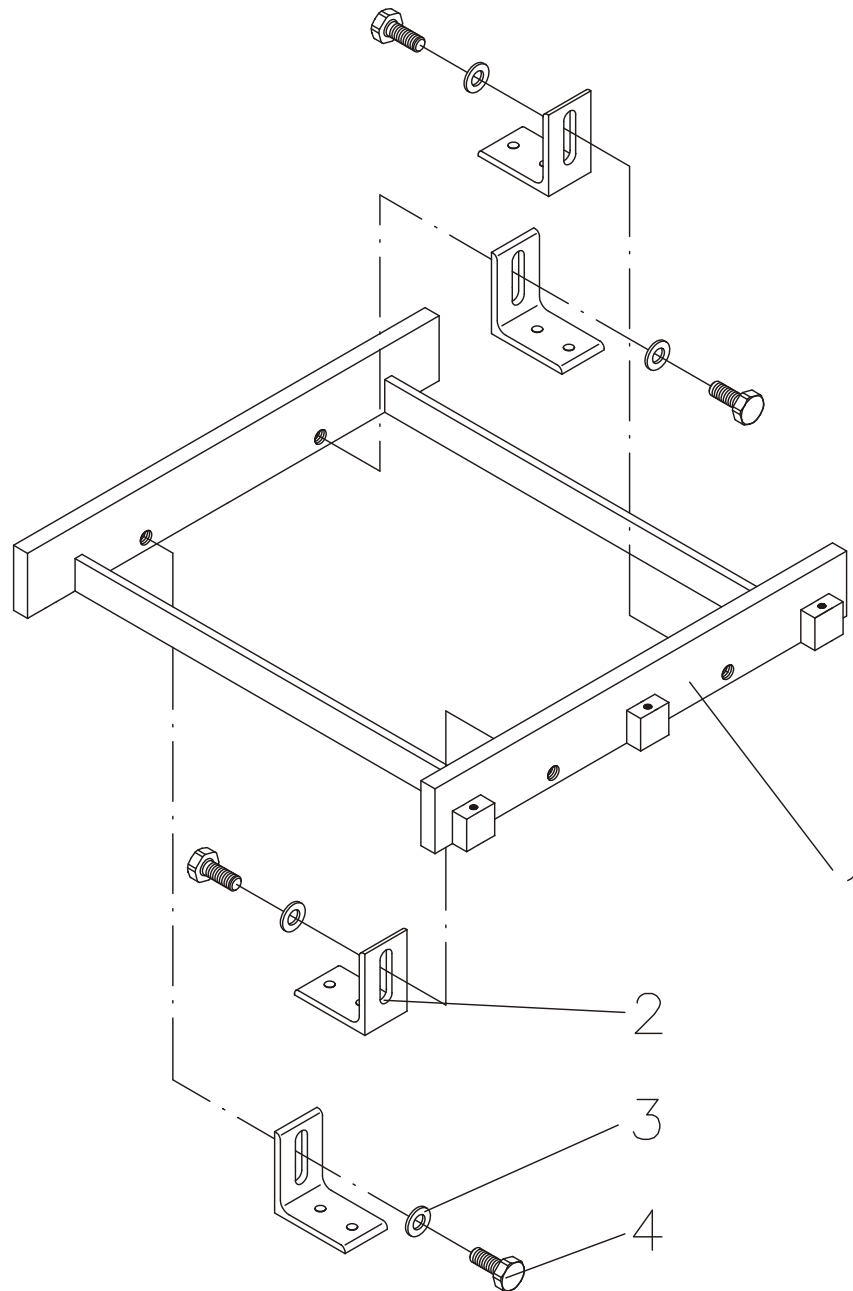
Item	Part #	Description	Specification
1	03 08 02370	Support	
2	02 08 02350	Stop Angle for Foundation Depth 230 mm	
	02 08 02355	Stop Angle for Foundation Depth 280 mm	
3	22 0125 16 1	Washer	A17
4	22 0933 16040 1	Hex Head Cap Screw	M16x40

1.13.8 445 mm Support Assembly



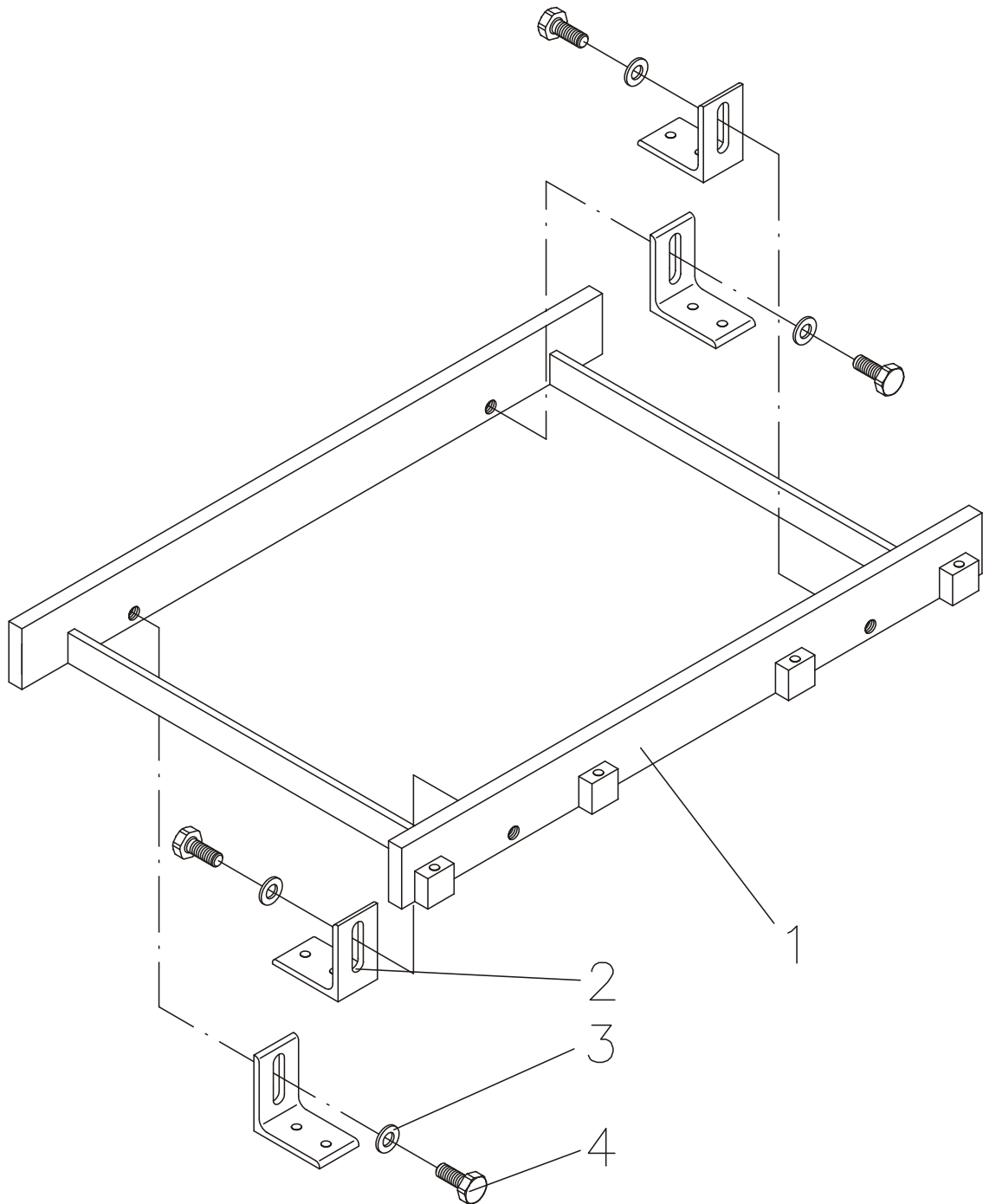
Item	Part #	Description	Specification
1	03 08 02320	Support	
2	02 08 02350	Stop Angle for Foundation Depth 230 mm	
	02 08 02355	Stop Angle for Foundation Depth 280 mm	
3	22 0125 16 1	Washer	A17
4	22 0933 16040 1	Hex Head Cap Screw	M16x40

1.13.9 585 mm Support Assembly



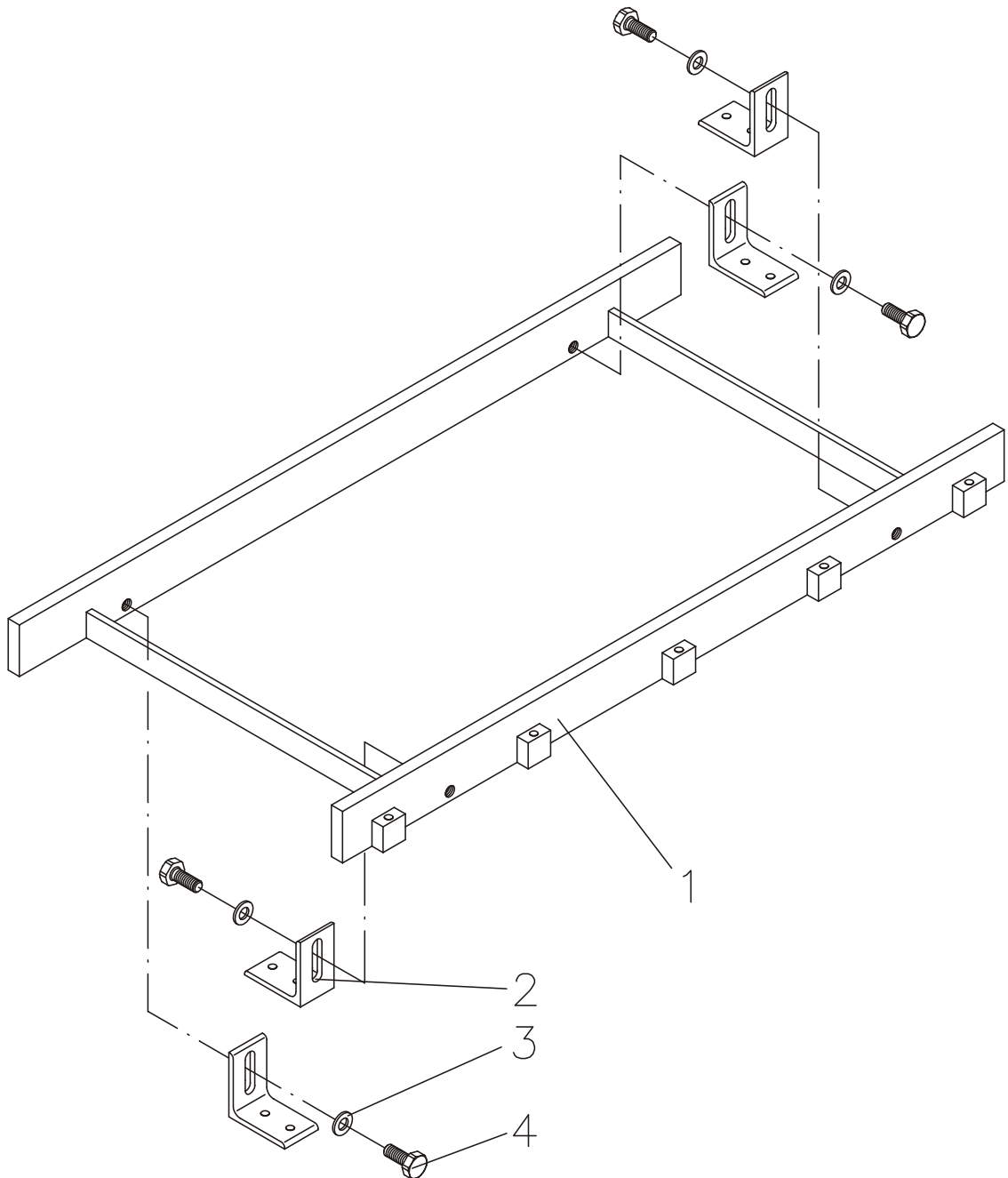
Item	Part #	Description	Specification
1	03 08 02250	Support	
2	02 08 02350	Stop Angle for Foundation Depth 230 mm	
	02 08 02355	Stop Angle for Foundation Depth 280 mm	
3	22 0125 16 1	Washer	A17
4	22 0933 16040 1	Hex Head Cap Screw	M16x40

1.13.10 885 mm Support Assembly



Item	Part #	Description	Specification
1	03 08 02280	Support	
2	02 08 02350	Stop Angle for Foundation Depth 230 mm	
	02 08 02355	Stop Angle for Foundation Depth 280 mm	
3	22 0125 16 1	Washer	A17
4	22 0933 16040 1	Hex Head Cap Screw	M16x40

1.13.11 1185 mm Support Assembly



Item	Part #	Description	Specification
1	03 08 02300	Support	
2	02 08 02350	Stop Angle for Foundation Depth 230 mm	
	02 08 02355	Stop Angle for Foundation Depth 280 mm	
3	22 0125 16 1	Washer	A17
4	22 0933 16040 1	Hex Head Cap Screw	M16x40

